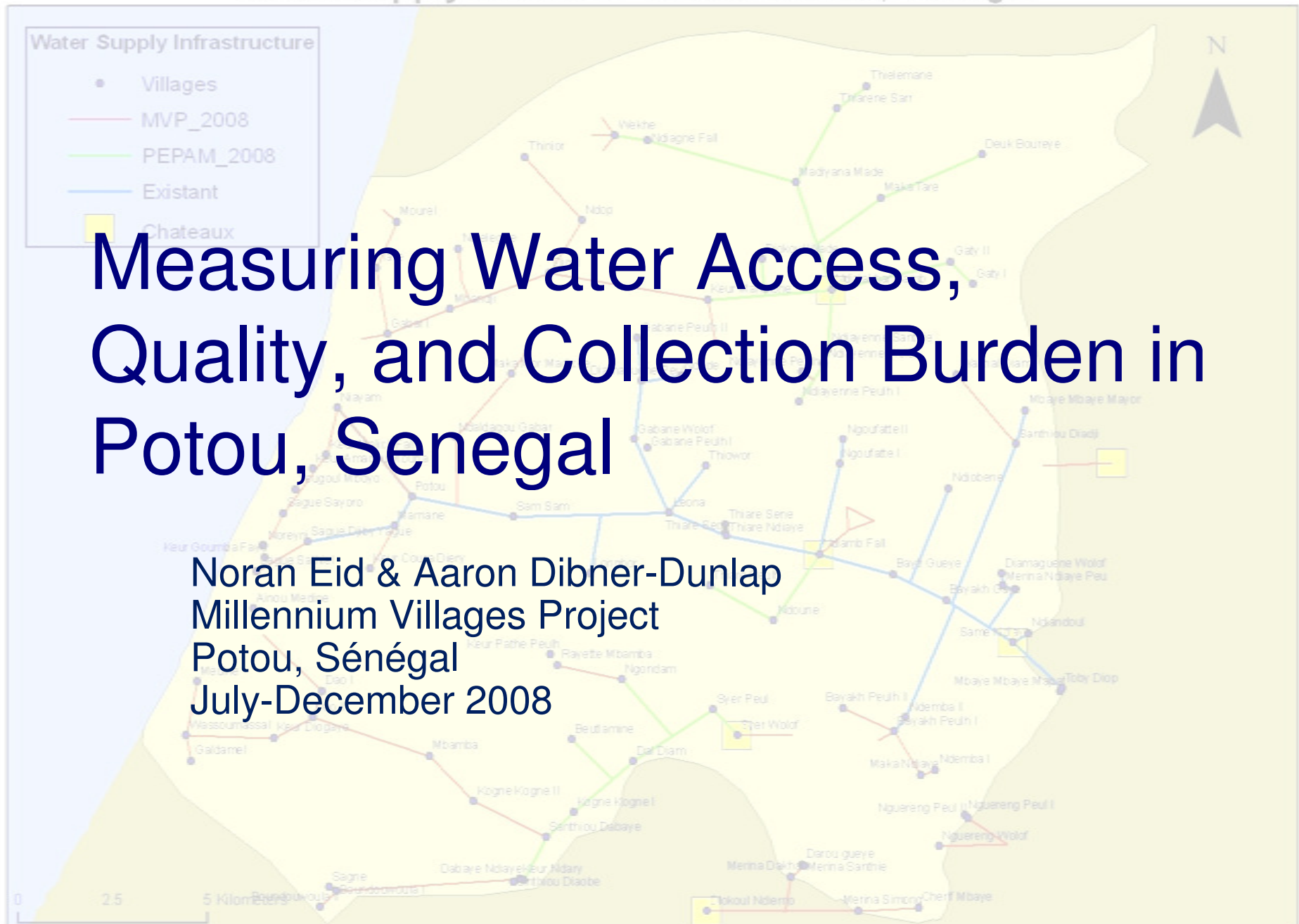


Water Supply Network - Potou Cluster, Senegal





Research Questions

- Are inhabitants using the public taps?
- Water Use:
 - piped water users vs. well water users?
- What determines source choice?





July/August 2008

Baseline household survey

- 600 households targeted
 - 1/2 with access to preexisting networks
 - 1/2 without access currently

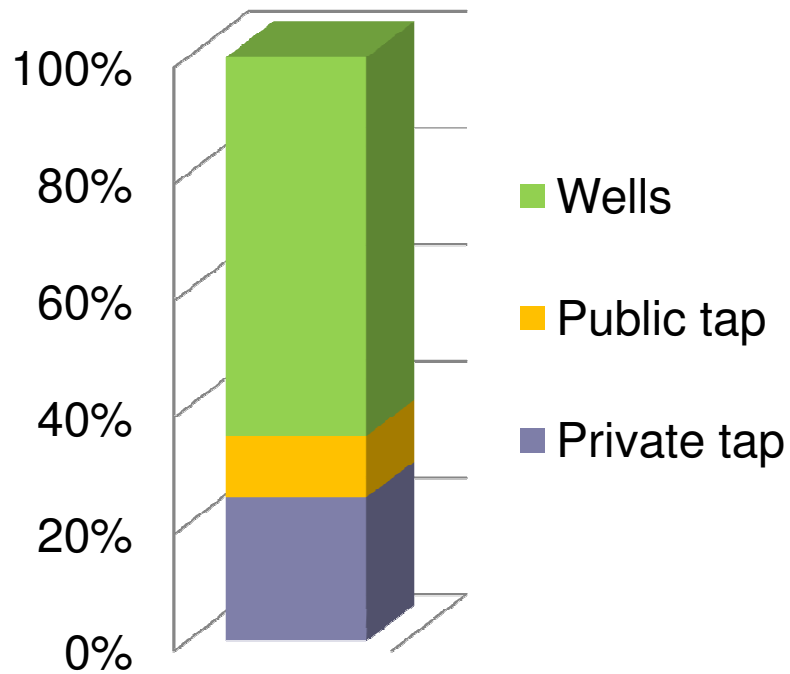
- 12 survey takers

- ~ 5 days

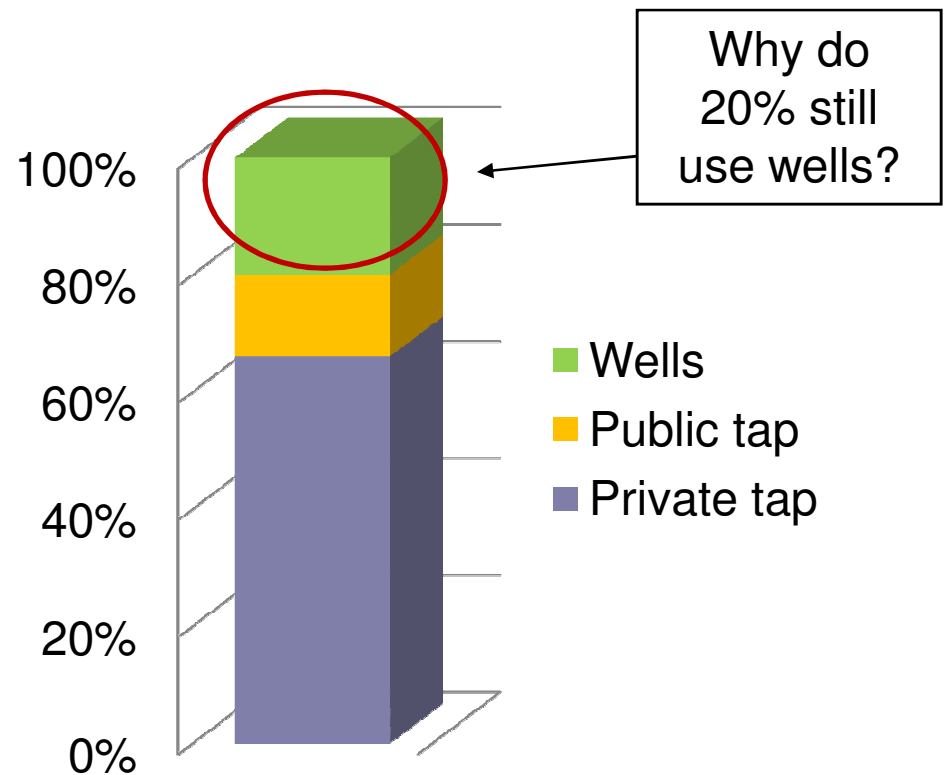
- Survey focus:
 - Classification and distance of water sources
 - Collection – time, method, quantity
 - Consumption – quantity by category, preferred source

Survey results

% utilization by source, entire sample

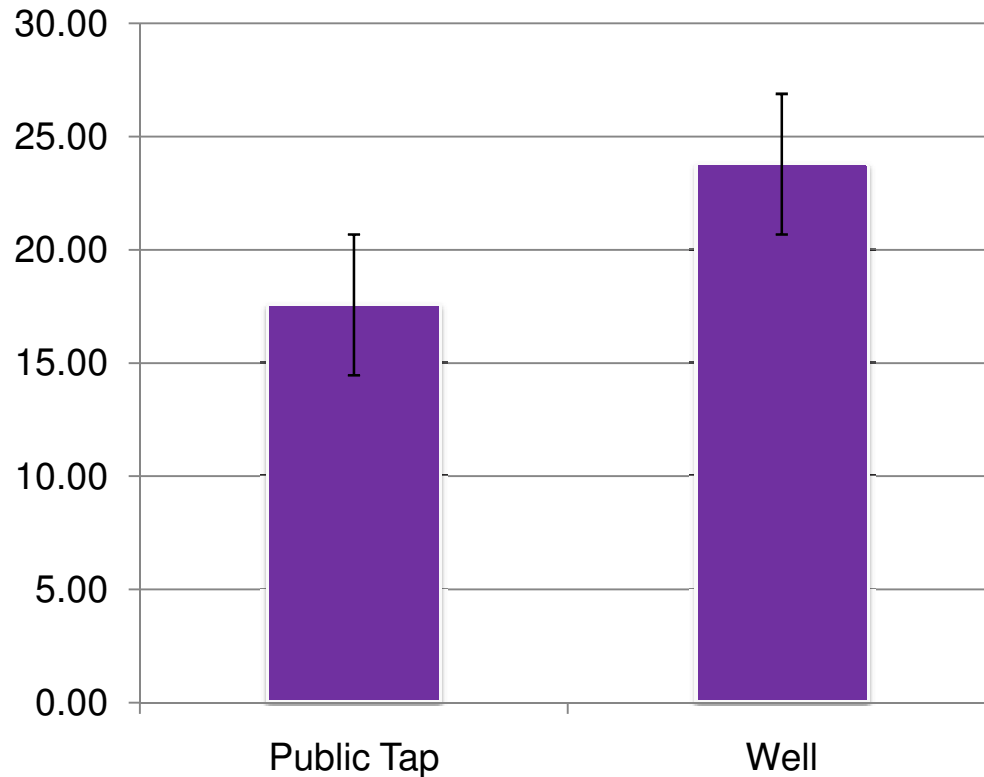


% utilization by source, access to preex. network

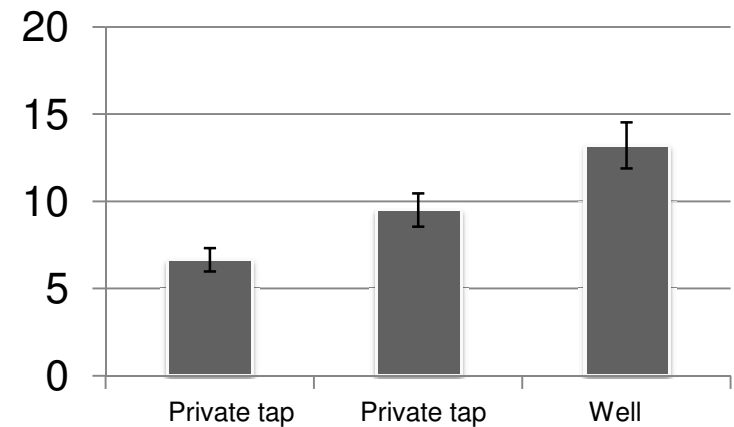


Survey results

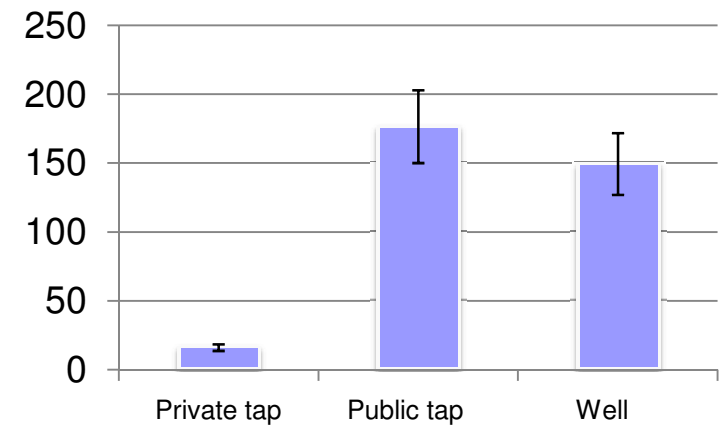
**Per capita consumption volume
(l/p/d, all people in hh), not
counting livestock**



**Total trips to collection
source per day**




**Distance to source
(meters)**





Key findings (baseline survey)

- Public tap users consume less water than others
- Choice between public tap and well still unclear; seems to be distance-related, but price may be a factor



Follow-up Survey - November 2008

Objectives

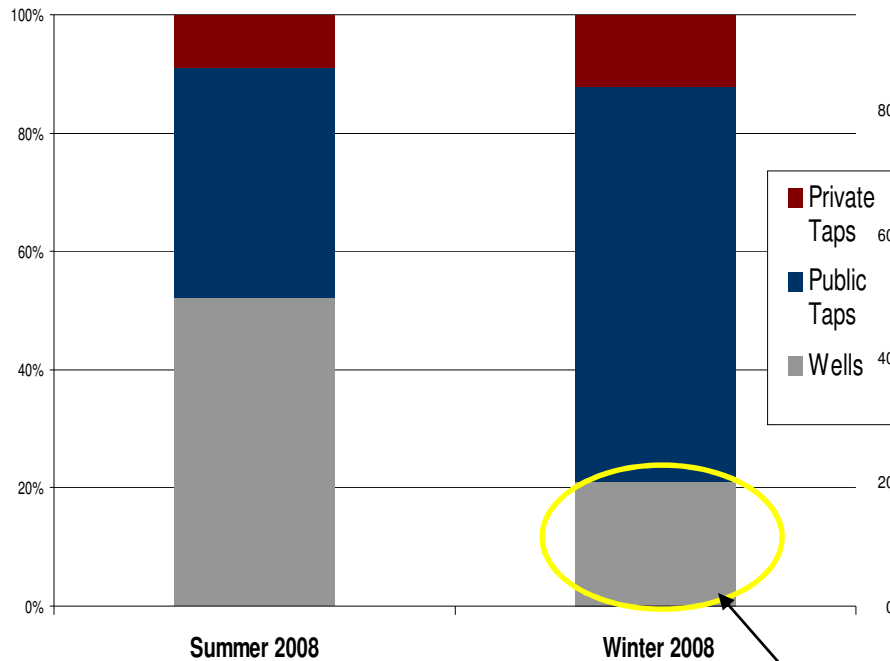
- Wealth as a determinant in household preference of water source
- Confirm the effect of distance on the primary choice preference

HH Survey

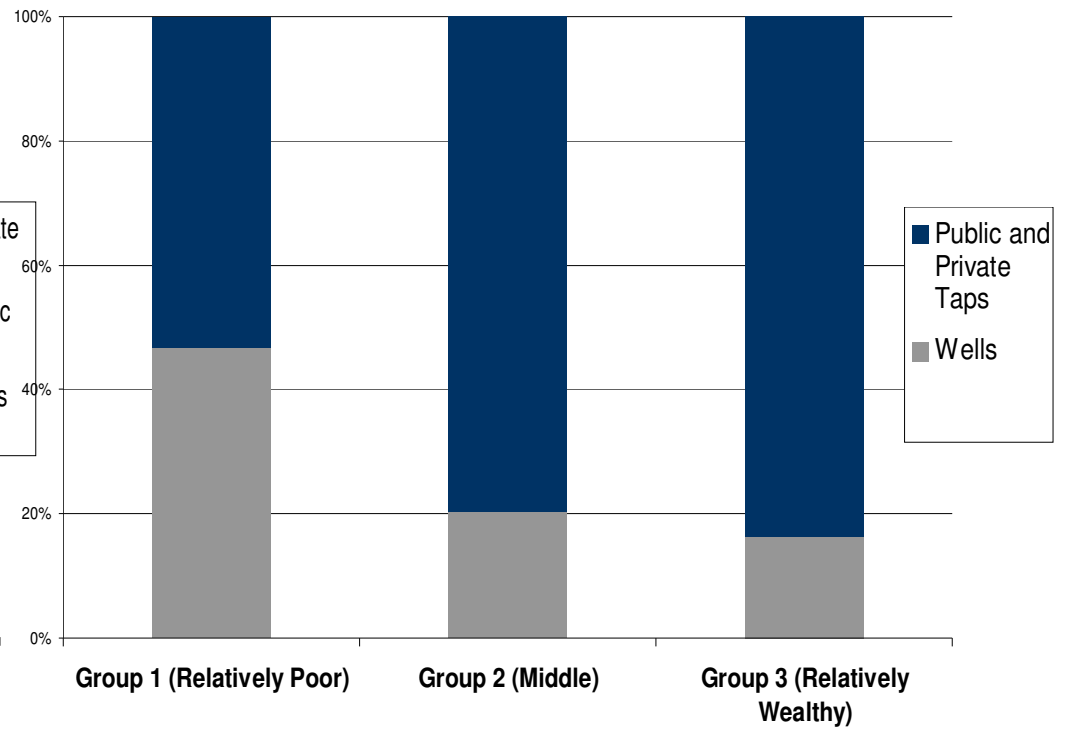
- 150 households from baseline survey
 - 75 public tap users
 - 75 well users

Survey Results

Primary Water Source Preference - Summer and Winter 2008



Wealth Ranking and Primary Source Preference



Still 20%!



Distance Comparison for Subgroup of Well Users

Average Distance between Household and nearest Well	128.3 meters
Average Distance between Household and nearest Public Tap	650.1 meters
Average Difference	521.8 meters

*The subgroup of households which changed their primary source during the past 5 months shortened the distance to their primary sources by an average of 46 meters



Key Findings

- Wealth ranking is directly correlated with choice of primary source
- Distance is a main determinant in choosing primary water source



Discussion & Next Steps

- Policy recommendations:
 - Distance is critical in public tap scheme planning
 - Private tap subsidies are effective and crucial for uptake
- Why is consumption lower for users of public taps?
 - Price too high? Distance too far?
 - How do we tackle these problems & reach the final 20%?
- Next steps...
 - Building a linear probabilistic model to predict source choice (well vs. public tap) as function of absolute & comparative distance, household wealth, taste preferences



Thank you!

Acknowledgments:

MVP Potou Team, especially Dr. Omar Diouf, Ousmane Diouf, Meissa Diop.
Dr. Vijay Modi, Brett Gleitsmann